

Welcome to Carter's Charity

Reception Intake

September 2025



Home

Child

School



1. Whole school information

2. Office information

3. Curriculum & Classroom

4. Induction Process



1. Whole school information

- Communication
- Learning Support
- Safeguarding
- Safety
- Expectations

Whole school information - Communication

- Parentmail
- [ClassDojo](#)
- Facebook
- Website: www.carters.lancs.sch.uk



Whole school information - Learning Support

SEND provision
Agency Partnerships
Family support

Free School Meals & Pupil Premium
Medical
Dietary



Whole school information

- Safeguarding

- Protecting children from maltreatment;
- Preventing impairment of children's mental and physical health or development;
- Ensuring that children grow up in circumstances consistent with the provision of safe and effective care; and
- Taking action to enable all children to have the best outcomes.
- Encompass Project

Whole school information

- Safety & Wellbeing

- Premises
- Health & First Aid
- Wellbeing focus: outside; mental health



Star of Safety



Co-Operate



Rule of Law

Respect

Independent

Responsible

TRUSTED
ADULTS IN
SCHOOL

Tolerance

Democracy

Positivity

Resilience

OUR BRITISH AND CORE
SCHOOL VALUES IN ACTION
EVERYDAY

Individual Liberty

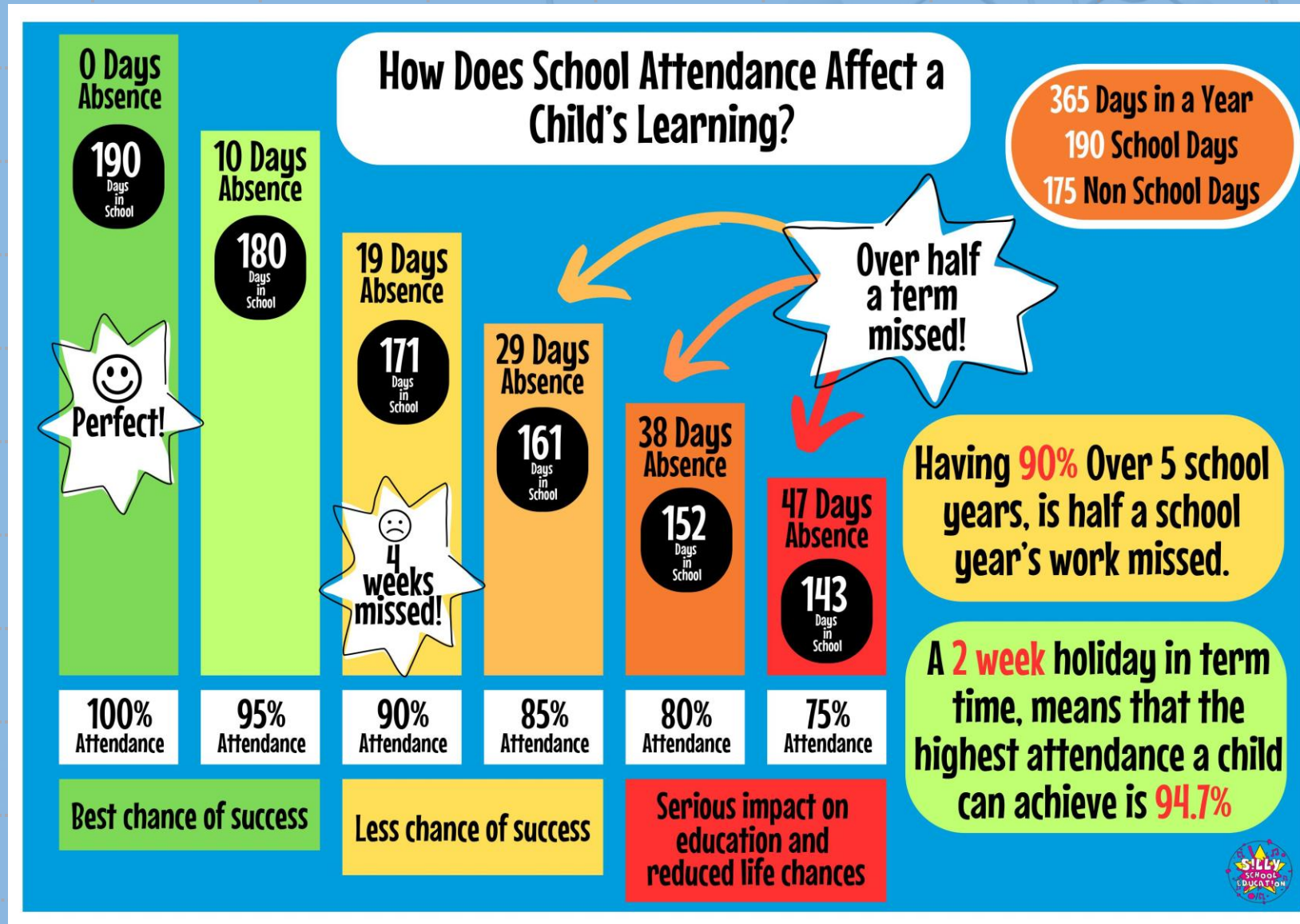
Whole school information

- Expectations

- Attendance & Punctuality
- Support for learning, behaviour & attitude
- Appearance



Attendance



Attendance

- Attendance law
 - Not able to authorise **any** holidays in term time
 - Government expects schools to consider legal route for ALL holiday leave.
 - Our policy available on website.
 - All unauthorised absence - holidays, late after registers closed, unrealistic reasons for absence, no explanations given for absence - will be collated and referrals made to the local authority.
 - We will apply commonsense and clear criteria for not referring.



Uniform

New policy from September 2026.

General (All year round)

School jumper, cardigan, sweatshirt or hoodie	This is the only item that we insist is branded with the school logo. These can be ordered through school or from https://www.ualonline.uk/?s=carter%27s
Grey shorts, trousers, skirt or pinafore	Grey
Gingham dress	Blue
Polo shirt	White: with or without the school logo but no other visible logos
Plain socks or tights	White or grey
School shoes	Trainers are not to be worn on non-active uniform days

Active Uniform (to be worn on PE/Games days)

School jumper, cardigan, sweatshirt or hoodie	This is the only item that we insist is branded with the school logo. These can be ordered through school or from https://www.ualonline.uk/?s=carter%27s
Polo shirt or t-shirt	White: with or without the school logo but no other visible logos
Jogging pants, tracksuit trousers or shorts/skorts	Black or blue with NO visible logo Cycling shorts are allowed but must be no shorter than mid-thigh
Trainers	Black or plain; not multi-coloured

Jewellery / Make-up

- The only jewellery allowed are plain and simple ear studs. Anything fancy or sparkly or large is not allowed.
- Jewellery must not be worn on PE/Games days or be easily removed.
- No make-up, including flavoured/coloured lip balm
- No nail varnish or false nails
- Hair
 - No braids/tramlines/colours
 - All clips/bands/bobbles must be plain and simple



Office information

- Admission Information
- Communications to/from the Office
- ParentPay
 - Bus, Super Stars, Uniform, Trips
- Dinners
- Milk 4 Life - register after Tuesday 22nd July please!
- Absence procedures
- Photo/Video policy



School calendar 2025/26

AMENDED PATTERN MARCH 2025

September 2025							October 2025							November 2025							December 2025						
Mo	Tu	We	Th	Fr	Sa	Su	Mo	Tu	We	Th	Fr	Sa	Su	Mo	Tu	We	Th	Fr	Sa	Su	Mo	Tu	We	Th	Fr	Sa	Su
1	2	3	4	5	6	7			1	2	3	4	5						1	2	1	2	3	4	5	6	7
8	9	10	11	12	13	14	6	7	8	9	10	11	12	3	4	5	6	7	8	9	8	9	10	11	12	13	14
15	16	17	18	19	20	21	13	14	15	16	17	18	19	10	11	12	13	14	15	16	15	16	17	18	19	20	21
22	23	24	25	26	27	28	20	21	22	23	24	25	26	17	18	19	20	21	22	23	22	23	24	25	26	27	28
29	30						27	28	29	30	31			24	25	26	27	28	29	30	29	30	31				
January 2026							February 2026							March 2026													
Mo	Tu	We	Th	Fr	Sa	Su	Mo	Tu	We	Th	Fr	Sa	Su	Mo	Tu	We	Th	Fr	Sa	Su							
			1	2	3	4							1							1							
5	6	7	8	9	10	11	2	3	4	5	6	7	8	2	3	4	5	6	7	8							
12	13	14	15	16	17	18	9	10	11	12	13	14	15	9	10	11	12	13	14	15							
19	20	21	22	23	24	25	16	17	18	19	20	21	22	16	17	18	19	20	21	22							
26	27	28	29	30	31		23	24	25	26	27	28		23	24	25	26	27	28	29							
														30	31												
April 2026							May 2026							June 2026							July 2026						
Mo	Tu	We	Th	Fr	Sa	Su	Mo	Tu	We	Th	Fr	Sa	Su	Mo	Tu	We	Th	Fr	Sa	Su	Mo	Tu	We	Th	Fr	Sa	Su
		1	2	3	4	5					1	2	3	1	2	3	4	5	6	7			1	2	3	4	5
6	7	8	9	10	11	12	4	5	6	7	8	9	10	8	9	10	11	12	13	14	6	7	8	9	10	11	12
13	14	15	16	17	18	19	11	12	13	14	15	16	17	15	16	17	18	19	20	21	13	14	15	16	17	18	19
20	21	22	23	24	25	26	18	19	20	21	22	23	24	22	23	24	25	26	27	28	20	21	22	23	24	25	26
27	28	29	30				25	26	27	28	29	30	31	29	30						27	28	29	30	31		

Overview 2025/2026

Autumn Term		Spring Term		Summer Term	
Monday 1 st September	INSET Day 1	Monday 5 th January	INSET Day 4	Monday 13 th April	School reopens
Tuesday 2 nd September	School Reopens	Tuesday 6 th January	School Reopens	Monday 4 th May	Bank Holiday Monday
Thursday 23 rd October	School Closes for half term	Friday 13 th February	School Closes for half term	Friday 22 nd May	School closes for half term
Friday 24 th October	Inset Day 2	Monday 23 rd February	School Reopens	Monday 1 st June	School Reopens
Monday 3 rd November	School Reopens	Friday 27 th March	School closes for Easter	Friday 17 th July	School closes for Summer
Wednesday 17 th December	School Closes for Christmas			Monday 20 th July	INSET Day 5
Friday 19 th Dec	INSET Day 3				



AUTUMN TERM

September	October	November	December
Meet the teacher Evening		Parents' Evening	Parent Celebration

SPRING TERM

January	February	March
		Parents' Evening Parent Celebration



SUMMER TERM

April	May	June	July
			End of year report Parent Celebration

Curriculum & Classroom

The Reception Year is the final year of the Early Years Foundation Stage which is based on the recognition that young children learn best through play and active learning.

It is developed around 4 themes:

1. A unique Child- Observe what a child is learning
2. Positive Relationships- What adults can do
3. Enabling Environments- What adults could provide
4. Learning and Developing- Children's achievements through the above



Curriculum & Classroom

There are 7 areas of learning in the Early Years Foundation stage (EYFS) which we cover throughout the year:

Personal, Social and Emotional Development

Communication and Language

Physical Development

Literacy

Mathematics

Understanding the World

Expressive Arts and Design

This does not mean that all of the children's learning is divided up into areas. In one activity they can be developing knowledge, understanding and new skills across several areas of learning at once.



Curriculum & Classroom

Personal, social and emotional development

This area of learning helps children to feel good about themselves and others so they are able to develop positive relationships. They learn to work as part of a group or class, taking turns and sharing and to show their own feelings in appropriate ways. It supports them to become independent, excited and motivated learners.



Communication and language development

This helps children to develop language through talking, thinking and listening in different situations. They learn to listen with increasing attention, responding to stories and asking and answering lots of questions!

Physical development

Making progress in physical development gives children confidence and enables them to feel the benefits of being healthy and active. Your child will have daily opportunities to learn outdoors, as well as participating in structured PE sessions. They will also develop fine motor skills through using scissors, glue, paintbrushes and pencils.



Curriculum & Classroom

Mathematics

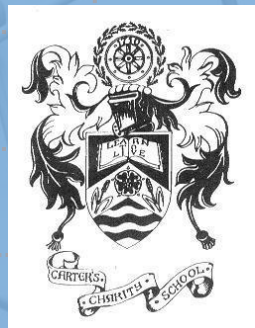
This area of learning includes developing mathematical understanding through stories, songs, games, everyday activities and imaginative play so that children enjoy experimenting and become confident and curious about numbers, shapes, patterns and measures.

Understanding the world

Children develop knowledge, skills and understanding that help them to make sense of the world. This is the foundation for later work in history, geography, science, RE and computing.

Expressive arts and design

This area of learning includes art, music, dance, drama and imaginative play - opportunities for children to try new experiences and express themselves in a variety of ways. Creativity is an important part of successful learning; it enables children to make connections between experiences, solve problems and be inventive.



Curriculum & Classroom



Literacy

To support children in their early reading and writing they are encouraged to mark make, enjoy stories, books and rhymes and link sounds and letters.

Phonics

We use a phonics scheme called Twinkl Phonics.

[Introduction to phonics - Carter's Charity Voluntary Controlled Primary School \(carters.lancs.sch.uk\)](http://carters.lancs.sch.uk)

The first group of letters are s, a, t, p, i and n as many short words can then be blended and segmented using these eg pat, pin, sat.

Once children are confidently blending sounds together to read words, we begin to send reading books home-for some children, this can happen quickly and for others it can take a little longer, so please don't worry if your child seems to be taking longer to pick up this skill!



Curriculum & Classroom

What does your child need to bring?

Reading bag – the first one is free! They won't need any other school bag as we don't have room in the cloakrooms. They won't need a pencil case either.

A pair of named wellies.

A named water bottle.

Clothing suitable for the weather – warm coat and gloves/sunhat etc.

Please label all of your child's clothing, including shoes.

Active uniform on PE days



Curriculum & Classroom

A happy start to school

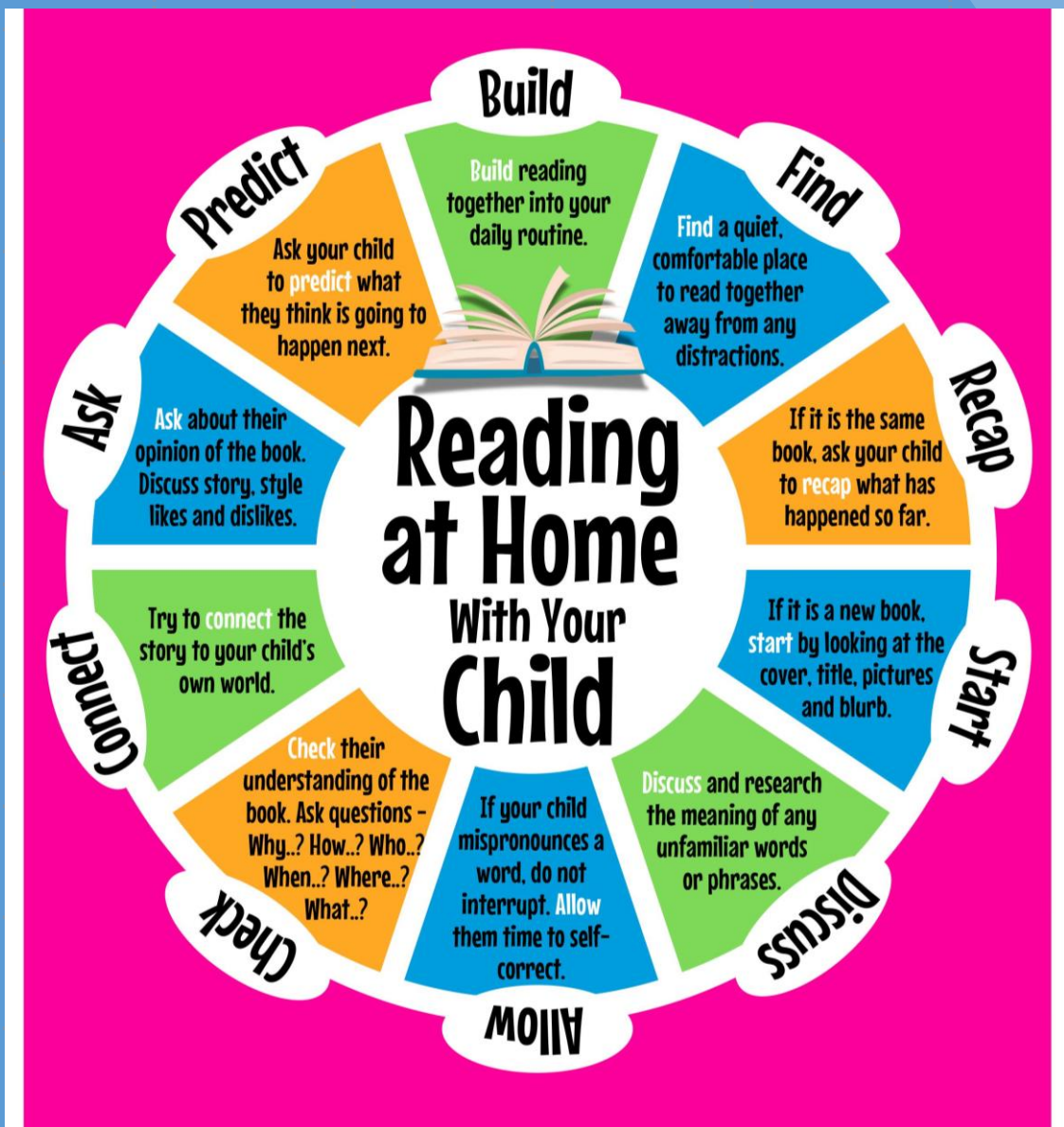
You can help your child in many ways:

- Talk to them and answer their many questions!
- Enjoy sharing a variety of books together
- Sing songs and nursery rhymes
- Encourage your child to draw and make marks with a variety of materials

Our aim is for both you and your child to have a happy and confident beginning to their school life at Carter's - it would be most helpful if your child can:

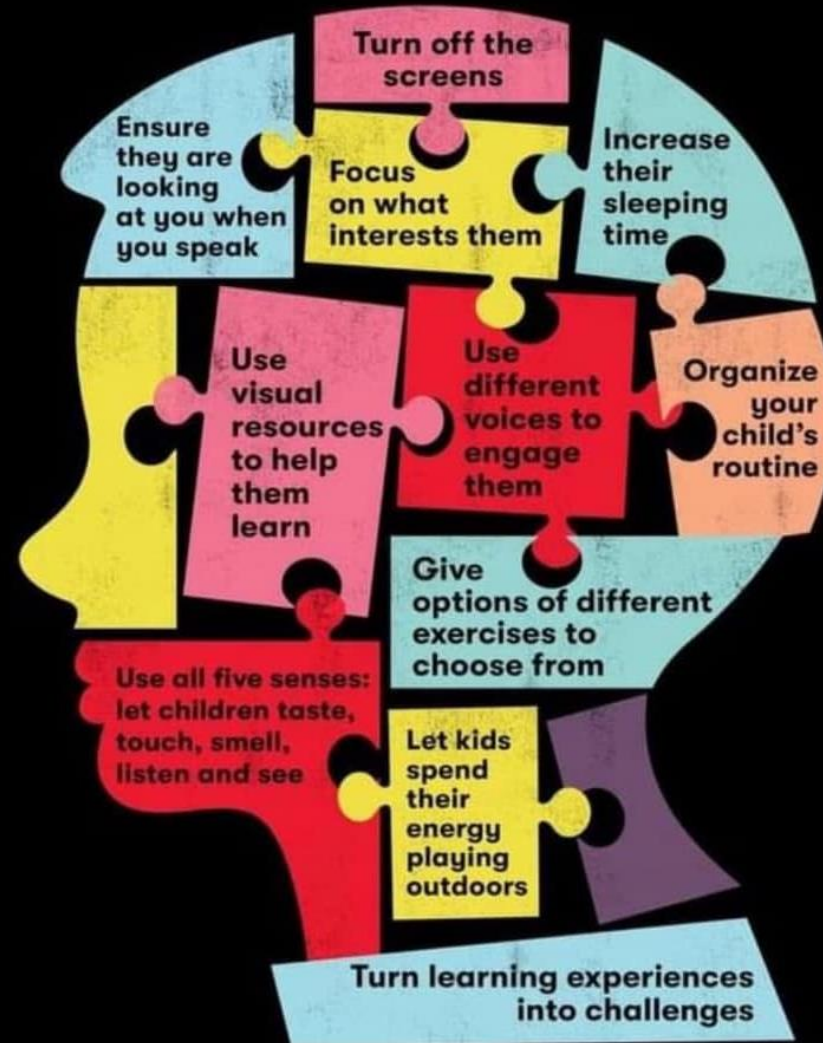
- Recognise their name (so they can find their peg/tray/clothes)
- Take off and put on shoes and coat independently
- Use the toilet independently







TIPS TO HELP PARENTS IMPROVE CHILDREN'S ATTENTION SPANS



Induction Process

- Taster Sessions
 - Staff meeting with nurseries or settings
 - Phased start in September
 - Buddies
 - New starter lunch
 - Friday 11th July
- to be ordered, booked and paid for by
9am Friday 4th July please



Explore

Dream

Discover



INDUCTION PLAN 2025			
Induction evening	Tuesday 20 th May	6:30 – 8pm	Parents/Carers only
Induction Session 1	Monday 9 th June	1:15 – 3:15pm	Max of 5 children per session
Induction Session 2	Thursday 12 th June	1:15 – 3:15pm	Max of 5 children per session
Induction Session 3	Monday 16 th June	1:15 – 3:15pm	Max of 5 children per session
Induction Session 4	Wednesday 18 th June	1:15 – 3:15pm	Max of 5 children per session
Sports' Day Morning	Thursday 19 th June	9:00 – 11:00 am	
Induction Session 5	Monday 23 rd June	1:15 – 3:15pm	Max of 5 children per session
Induction Session 6	Wednesday 25 th June	1:15 – 3:15pm	Max of 5 children per session
Sports' Day Back up	Thursday 26 th June	9:00 – 11:00 am	
Induction Session 7	Monday 30 th June	1:15 – 3:15pm	Max of 5 children per session
Induction Session 8	Wednesday 2 nd July	1:15 – 3:15pm	Max of 5 children per session
Induction Session 9	Monday 7 th July	1:15 – 3:15pm	Max of 5 children per session
New Starters' Lunch	Friday 11 th July	11:30 am	All children and families and buddies incl. siblings
Part Group Session	Tuesday 2 nd September	AM	Group A
Part Group Session		PM	Group B
Part Group Session	Wednesday 3 rd September	AM	Group B
Part Group Session		PM	Group A
Part Group Session	Thursday 4 th September	AM & lunch collect at 12:30pm	Group A
Part Group Session		PM 1:30 – 3:30pm	Group B
Part Group Session	Friday 5 th September	AM & lunch collect at 12:30pm	Group B
Part Group Session		PM 1:30 – 3:30pm	Group A
Full class	Monday 8 th September	Full Time	Whole cohort
Meet the teacher evening	Wednesday 10 th September	3:30 – 5pm	Everyone welcome

Any Questions?

Explore

Dream

Discover

