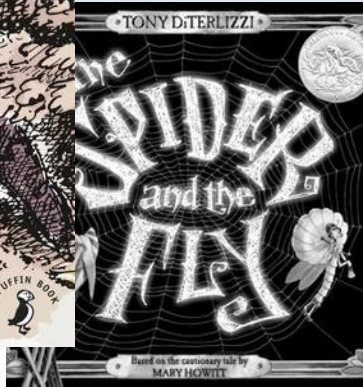
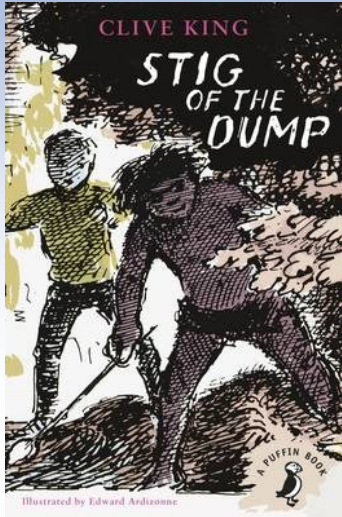
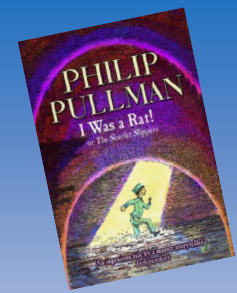




# Carter's Charity Primary School

## Shelduck Summer Newsletter



### AS CREATORS WE ARE...

**ART: Sculpture: Telling Stories through Drawing & Making**—explore character and narrative and create sculptures which convey these qualities through their form, texture, material, construction and colour. Sculptures based on books!

**DESIGN TECHNOLOGY: Cooking and Nutrition: Eating Seasonally**

Learning about seasonal foods and using their understanding to create a seasonal food tart

**MUSIC: Fly with the stars**—The children will develop listening skills in recognising a song's structure and changing chords, practise identifying crotchet and quaver durations, and develop composing skills .

**PHYSICAL EDUCATION:** Cricket, outdoor and adventurous activities, tennis, rounders

### HOW YOU CAN HELP US...

Our Active Kit days are on a Monday and Tuesday each week. Please send your children to school in their PE kit on these days. No jewellery may be worn. Pumps or trainers must be worn.

Please read with your child every night. Share your reading time together.

**Maths homework must be completed for Mondays and spelling tests will be on Friday.**

### INSPIRING START

**Presall Then and Now Trip**

### PARENT PRESENTATION

**All of our learning for the term—computer games to play, seasonal food to eat, sculptures to see...**

### AS MATHEMATICIANS WE ARE...

This term we will be revisiting fractions and beginning to calculate with them. We will also look at money, time, shape and statistics—lots to do!

### AS READERS AND WRITERS...

We will be writing a narrative based around Stig of the Dump, and will also write a discussion presenting different opinions before giving a conclusion.

After half-term, we will be writing, learning and performing poems with a nature theme; and studying explanation texts.

### AS INVESTIGATORS WE ARE...

**SCIENCE: Plants**—parts of a plant and their function, movement of water and dispersal of seeds.

**Light**—sources and reflectors of light. Lots of experiments on shadows and how they behave.

### AS ENQUIRERS WE ARE...

**GEOGRAPHY: Land Use**—what is land used for in the local area and why? Lots of fieldwork looking at the areas near school and map work including 4-figure grid references.

**HISTORY: How and why have Presall and Knott-End changed over time?** - A local study which will look at changes in industry, land use and architecture, and an exciting part of our Morecambe Bay Curriculum project.

**RELIGIOUS EDUCATION: Sikhism**—Why are the Gurus important to Sikhs?

**Christianity: God**—How (and why) have some people served God?

### AS COMMUNICATORS WE ARE...

**COMPUTING: Programming: Scratch**—remixing, creating and debugging computer programmes through Scratch. Includes the understanding of different blocks and the use of loops.

**LANGUAGES: Fruits**—learn 10 fruits and be able to give simple opinions 'I like' and 'I do not like'.

### AS YOUNG PEOPLE WE ARE...

**PSHE: Rights and Respect**—looking after themselves, others and their environment including work on money and budgets.

**Growing and Changing**—change in bodies, minds and relationships as the children grow older,